

# SMALL INVERTER HEAT PUMPS I-PAC 8-12-16-22

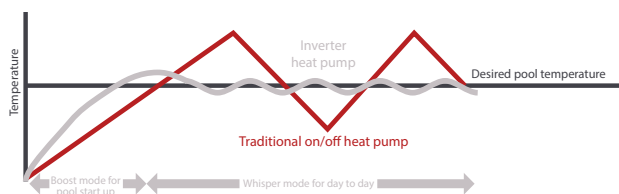


Inverter technology allows for efficient control of the pool temperature, and the I-PAC only uses what energy is needed when it is required. High efficiency with modulating step-less inverter compressor giving an average COP of 9.7.



- Average COP 9.7 = 2 x more efficient than on/off heat pumps
- Eco-friendly refrigerant R32 = 675 GWP, (Global Warming Potential)
- Inverter heat pump
- Power ratings from 9.5 to 25kW
- 9-11 dB(A) sound reduction compared to an equivalent on/off heat pump, with 'Whisper Mode'
- Operates in air temperatures of -5°C to +43°C
- Integrated controller with a touchscreen user interface
- Function settings for heating, cooling or heat/cool
- Soft start-up
- Aluminium alloy
- Built-in Wi-Fi module
- Winter protection cover included

## Temperature control chart



The PoolTherm App for our Calorex I-PAC inverter heat pumps is available on Android and iOS. Simply search for 'PoolTherm' in App Store or Google Play and download it today!



## Included in the box



**Rubber feet  
(kit of 4)  
1005526**



**Drainage kit  
1005558**

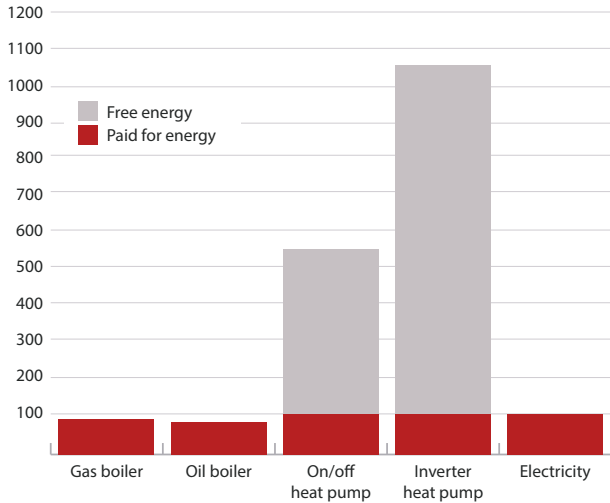


**Water union  
connectors 2 x 1½  
2 x 50mm 1005629**

# SMALL INVERTER HEAT PUMPS I-PAC 8-12-16-22

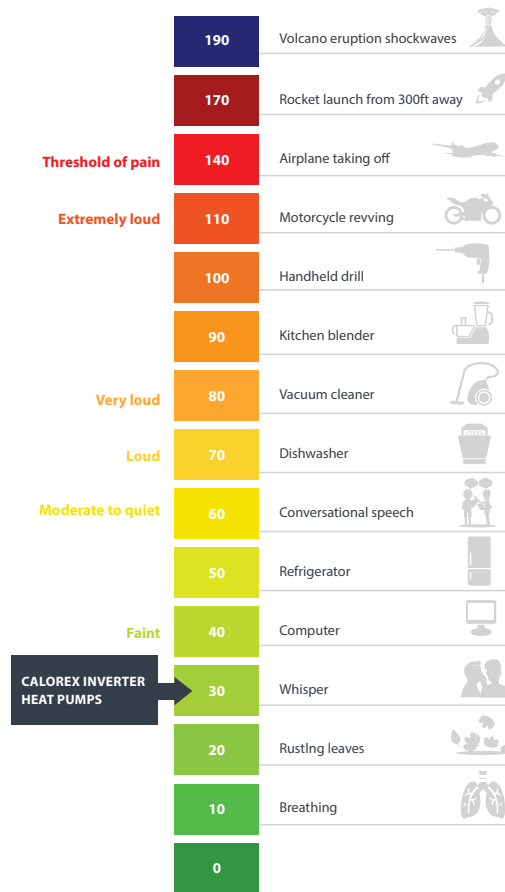


## Heating method efficiency chart

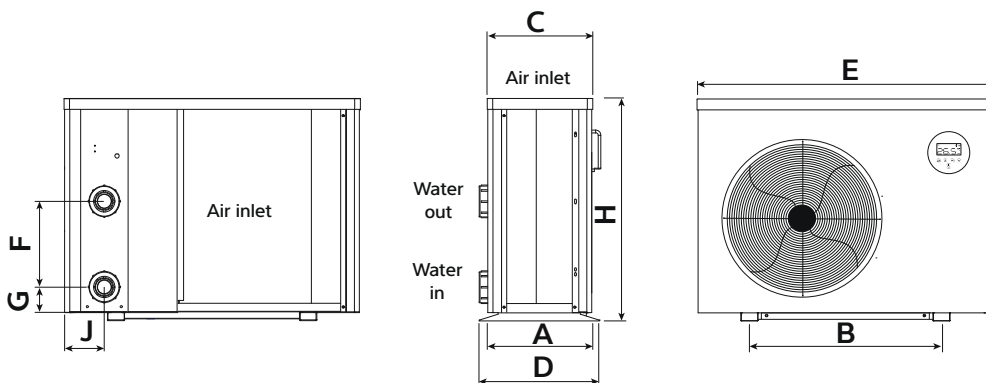


Great value, and environmentally conscious heating option, with energy consumption half that of a traditional on/off heat pump, and 1/10 of that for gas or electric pool heating.

## Where our heat pump sits on the decibel scale



## Dimensions



Model	A	B	C	D	E	F	G	H	J
I-PAC 8ALX	334	560	318	359	864	250	74	648	116
I-PAC 12ALX	334	560	318	359	864	290	74	648	116
I-PAC 16ALX	334	590	318	359	954	390	74	748	116
I-PAC 22ALX	404	720	388	429	1084	640	74	948	107

# SMALL INVERTER HEAT PUMPS

## I-PAC 8-12-16-22



Specifications	Units	I-PAC 8ALX	I-PAC 12ALX	I-PAC 16ALX	I-PAC 22ALX
Air temperature range	°C	-5-43	-5-43	-5-43	-5-43
Water temperature range	°C	12-40	12-40	12-40	12-40
<b>Performance – air 27°C 80% RH, water 27°C</b>					
Heating capacity	kW	9.5	13.0	20.0	25.0
COP range		13.2-5.4	13.5-5.6	13.5-5.7	13.8-5.8
Average COP at 50% speed		8.9	9.7	9.3	9.6
<b>Performance – air 15°C 70% RH, water 26°C</b>					
Heating capacity	kW	7.0	9.5	13.5	17.0
<b>Performance – air 5°C 70% RH, water 10°C</b>					
Heating capacity	kW	4.1	5.6	7.9	9.9
<b>Performance – air 35°C 80% RH, water 28°C</b>					
Cooling capacity	kW	3.9	5.2	7.4	9.4
Power supply	V/Hz	230/1ph/50	230/1ph/50	230/1ph/50	230/1ph/50
Rated input power	kW	0.3-1.79	0.40-2.38	0.57-3.21	0.69-4.25
Maximum input current	A	9.5	12.5	19.5	20.0
Water flow	m <sup>3</sup> /h	3.0-5.0	4.0-6.0	7.0-10.0	10.0-12.0
Water connection	"/mm	1½/50	1½/50	1½/50	1½/50
Compressor		Inverter	Inverter	Inverter	Inverter
Condenser		Titanium	Titanium	Titanium	Titanium
R32 gas weight/CO <sub>2</sub> equivalent	kg/t	0.6/0.41	0.9/0.61	1.1/0.74	2.0/1.35
Sound level @ 10m	dB(A)	19.6-31.5	21.9-32.0	24.3-36.1	24.9-36.7
Product size (w x d x h)	mm	864 x 359 x 648	864 x 359 x 648	954 x 359 x 748	1084 x 429 x 948
Weight	kg	47	49	68	90

# SMALL INVERTER HEAT PUMPS

## I-PAC+ 12-16-22-28



### Benefits

- All year heating for outdoor and indoor pools
- Can operate down to -10°C ambient air temperature
- High heating performance at lower temperatures – ideal for quick pool heat up at the start of the season
- Pool heating at altitude
- Higher cooling capacity
- Most efficient models – highest COP



- COP >10 = 2 x more efficient than on/off heat pumps
- Eco-friendly refrigerant R32 = 675 GWP, (Global Warming Potential)
- Inverter heat pump
- Power ratings from 15 to 36kW
- 9-11 dB(A) sound reduction compared to an equivalent on/off heat pump, with 'Whisper Mode'
- Operates in air temperatures of -10°C to +43°C
- Integrated controller with a touchscreen user interface
- Function settings for heating, cooling or heat/cool
- Soft start-up
- Aluminium alloy
- Built-in Wi-Fi module
- Winter protection cover included



The PoolTherm App for our Calorex I-PAC inverter heat pumps is available on Android and iOS. Simply search for 'PoolTherm' in App Store or Google Play and download it today!



### Included in the box



Rubber feet  
(kit of 4)  
1005526



Drainage kit  
1005558

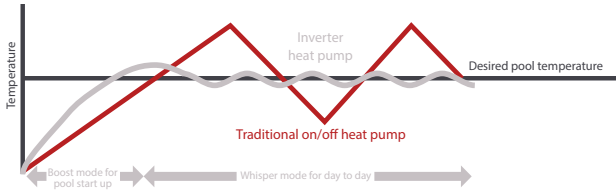


Water union  
connectors 2 x 1½  
2 x 50mm 1005629

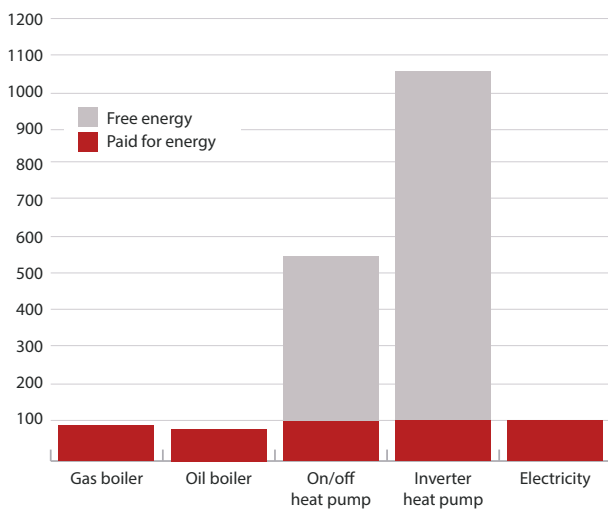
# SMALL INVERTER HEAT PUMPS I-PAC+ 12-16-22-28



## Temperature control chart

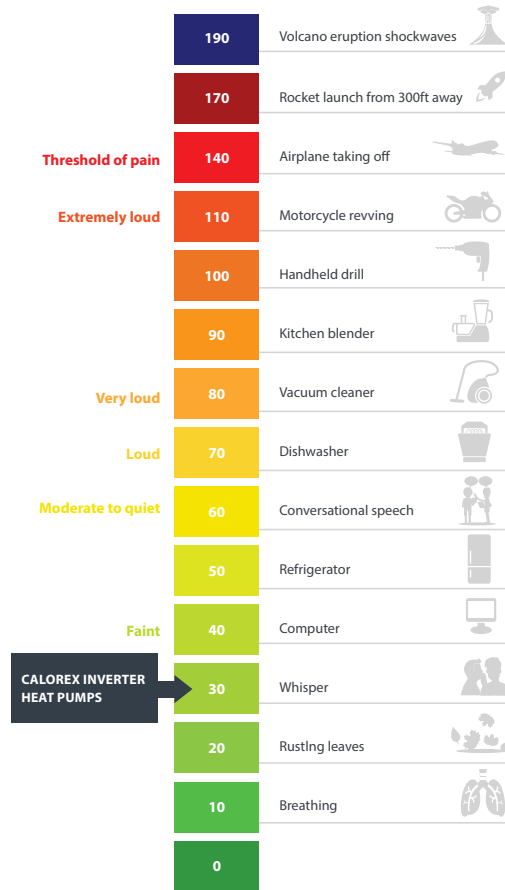


## Heating method efficiency chart

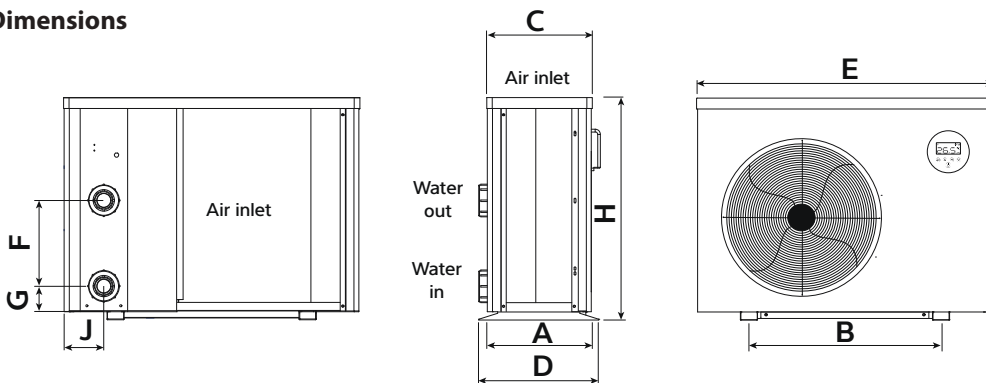


Great value, and environmentally conscious heating option, with energy consumption half that of a traditional on/off heat pump, and 1/10 of that for gas or electric pool heating.

## Where our heat pump sits on the decibel scale



## Dimensions



Model	A	B	C	D	E	F	G	H	J
I-PAC 12ALY	334	590	318	359	954	340	74	648	107
I-PAC 16ALY	404	590	388	429	954	460	74	755	107
I-PAC 16BLY	404	590	388	429	954	460	74	755	107
I-PAC 22ALY	404	720	388	429	1084	620	74	948	107
I-PAC 22BLY	404	720	388	429	1084	620	74	948	107
I-PAC 28BLY	514	790	498	539	1154	650	74	948	128

# SMALL INVERTER HEAT PUMPS

## I-PAC+ 12-16-22-28



Specifications	Units	I-PAC 12ALY	I-PAC 16ALY	I-PAC 16BLY	I-PAC 22ALY	I-PAC 22BLY	I-PAC 28BLY
Air temperature range	°C	-10-43	-10-43	-10-43	-10-43	-10-43	-10-43
Water temperature range	°C	12-40	12-40	12-40	12-40	12-40	12-40
<b>Performance – air 27°C 80% RH, water 27°C</b>							
Heating capacity	kW	15.0	21.0	21.0	27.5	27.5	36.0
COP range		15.0-6.6	14.8-6.4	14.8-6.4	15.0-6.8	15.0-6.5	14.8-6.0
Average COP at 50% speed		10.6	10.3	10.3	10.3	10.3	10.2
<b>Performance – air 15°C 70% RH, water 26°C</b>							
Heating capacity	kW	10.5	14.5	14.5	18.0	18.0	23.9
<b>Performance – air 5°C 70% RH, water 10°C</b>							
Heating capacity	kW	7.5	9.6	9.6	11.9	11.9	16.0
<b>Performance – air -10°C 70% RH, water 23°C</b>							
Heating capacity	kW	4.6	5.9	5.9	7.3	7.3	8.8
<b>Performance – air 35°C 80% RH, water 28°C</b>							
Cooling capacity	kW	6.7	9.5	9.5	11.9	11.9	16.0
Power supply	V/Hz	230/1ph/50	230/1ph/50	400/3ph/50	230/1ph/50	400/3ph/50	400/3ph/50
Rated input power	kW	0.27-2.28	0.41-3.15	0.41-3.15	0.48-3.91	0.48-3.91	0.64-5.20
Maximum input current	A	13.5	17.0	5.8	20.0	7.0	9.5
Water flow	m <sup>3</sup> /h	5.0-7.0	8.0-10.0	8.0-10.0	10.0-12.0	10.0-12.0	12.0-18.0
Water connection	"/mm	1½/50	1½/50	1½/50	1½/50	1½/50	1½/50
Compressor		Inverter	Inverter	Inverter	Inverter	Inverter	Inverter
Condenser		Titanium	Titanium	Titanium	Titanium	Titanium	Titanium
R32 gas weight/CO <sub>2</sub> equivalent	kg/t	0.9/0.61	1.2/0.81	2.0/1.35	1.2/0.81	2.0/1.35	2.7/1.82
Sound level @ 10m	dB(A)	20.8-24.5	20.4-33.7	20.4-33.7	23.0-34.4	23.0-34.4	22.1-34.2
Product size (w x d x h)	mm	954 x 359 x 648	954 x 429 x 755	954 x 429 x 755	1084 x 429 x 948	1084 x 429 x 948	1154 x 539 x 948
Weight	kg	52	68	68	90	93	120